

REVISIONS	BY

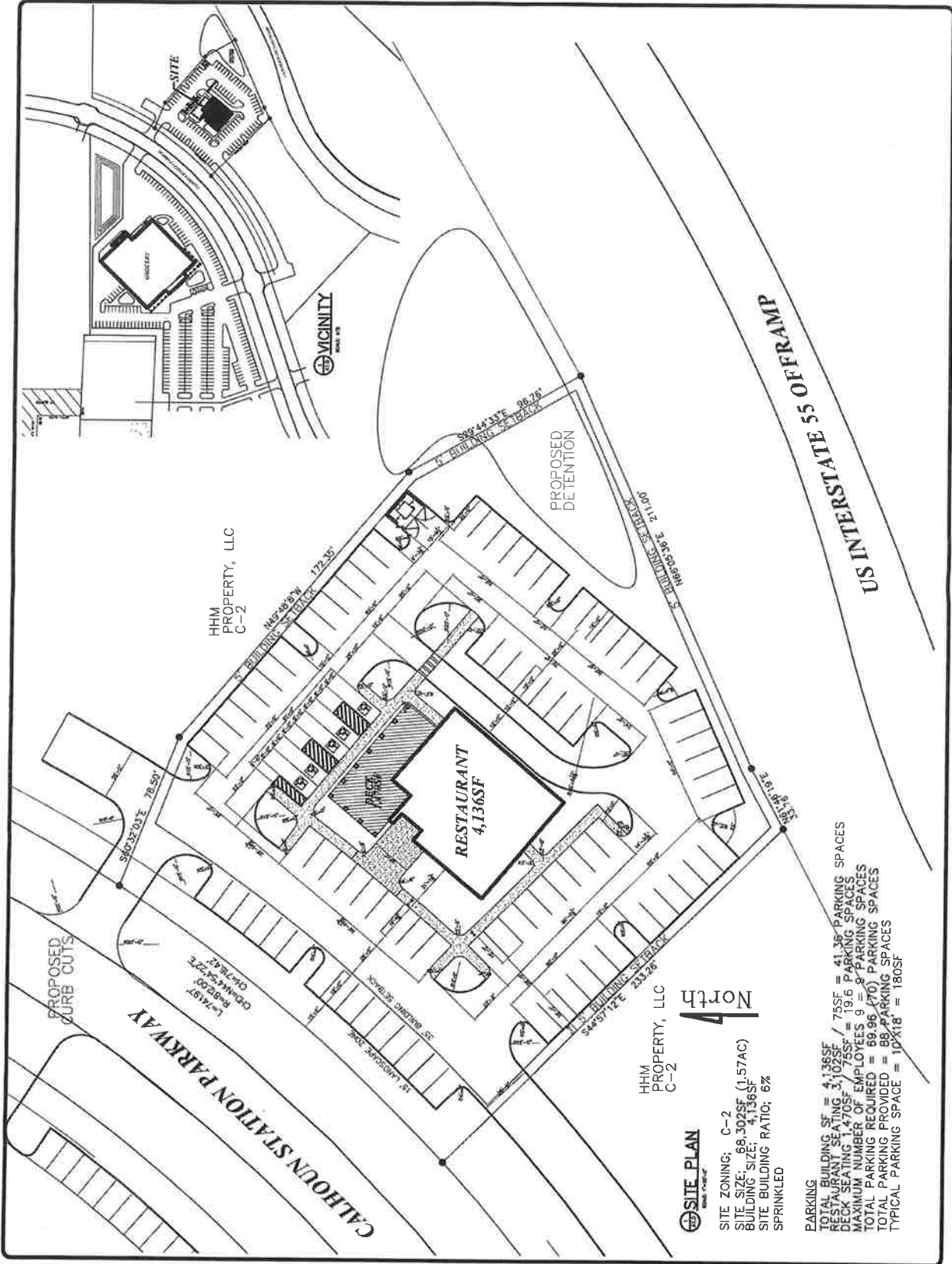


Twisted Kitchen  
 Calhoun Station Parkway  
 Cluckstadt, Mississippi

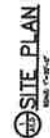


DATE	12/9/20
SCALE	AS SHOWN
PROJECT	

**A0.0**

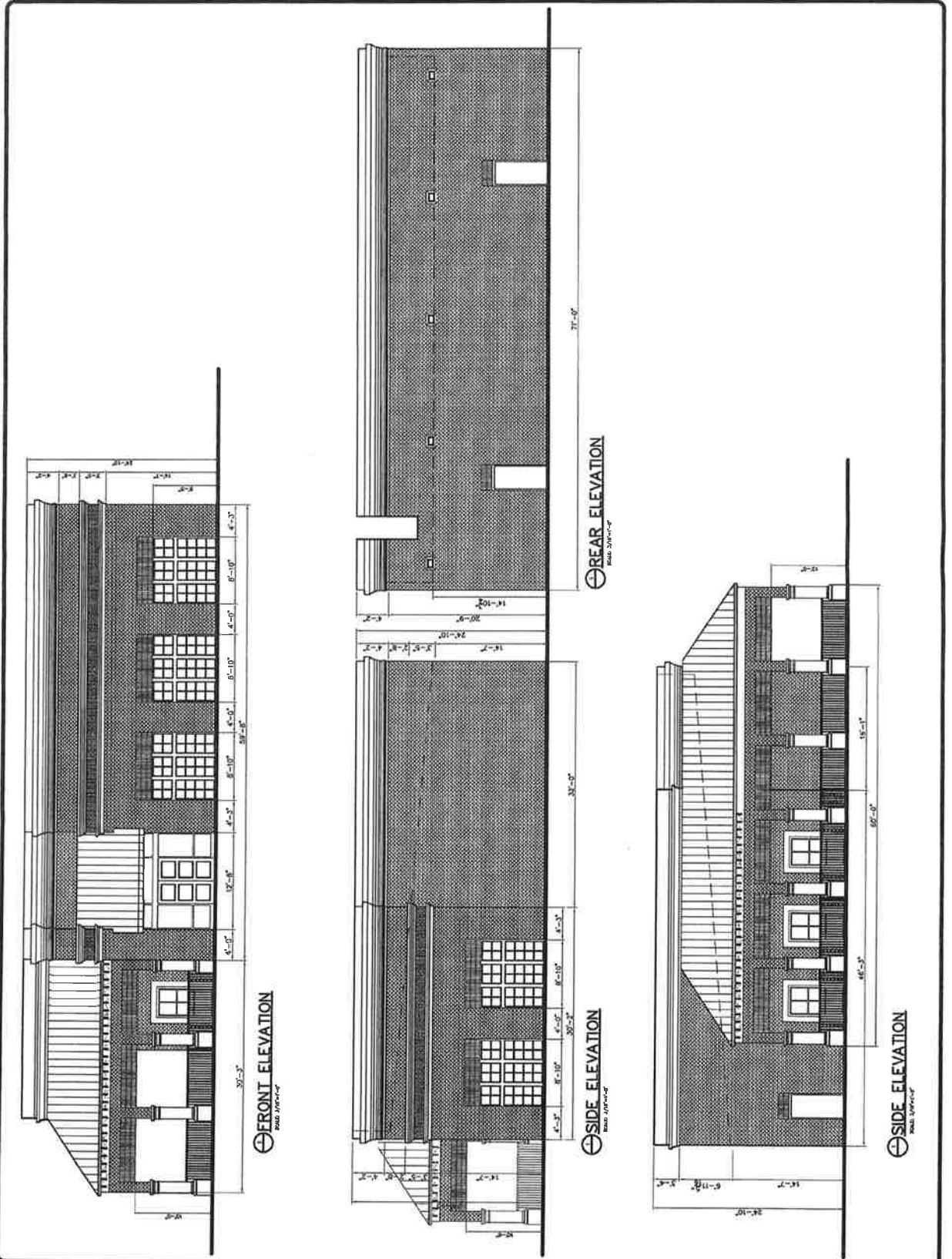


HHM PROPERTY, LLC  
 C-2

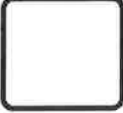


SITE ZONING: C-2  
 SITE SIZE: 68,302SF (1.57AC)  
 BUILDING SIZE: 4,136SF  
 SITE BUILDING RATIO: 6%  
 SPRINKLED

PARKING  
 TOTAL BUILDING SF = 4,136SF  
 RESTAURANT SEATING = 1,025F / 75SF = 41.35 PARKING SPACES  
 DECK SEATING = 1,470SF / 75SF = 19.6 PARKING SPACES  
 MAXIMUM NUMBER OF EMPLOYEES = 9 = 8 PARKING SPACES  
 TOTAL PARKING REQUIRED = 69.96 (70) PARKING SPACES  
 TOTAL PARKING PROVIDED = 88 PARKING SPACES  
 TYPICAL PARKING SPACE = 10'X18' = 180SF



REVISIONS	BY



**Twisted Kitchen**  
 Calhoun Station Parkway  
 Gluckstadt, Mississippi

**W.A.**  
 ROYALSON & ASSOCIATES  
 ARCHITECTS & DESIGNERS  
 1500 W. STATE ST. SUITE 100  
 JACKSON, MISSISSIPPI 39201  
 (601) 948-1111



DATE: 12/08/20  
 DRAWN BY: [Blank]  
 CHECKED BY: [Blank]  
**A3.0**

REVISIONS	BY




**Twisted Kitchen**  
 Calhoun Station Parkway  
 Cluckstad, Mississippi



DATE: 12/08/20  
 SCALE: 1" = 10'-0"  
 SHEET: L1.0

