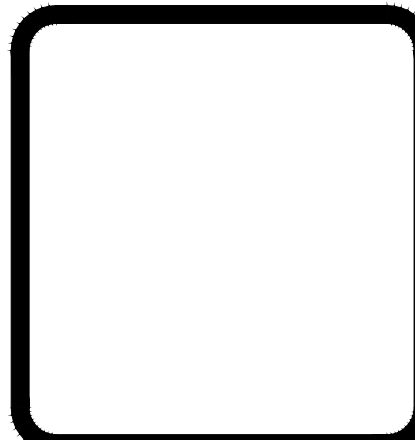


| REVISIONS | BY |
|-----------|----|
| | |
| | |
| | |
| | |
| | |
| | |
| | |
| | |
| | |
| | |

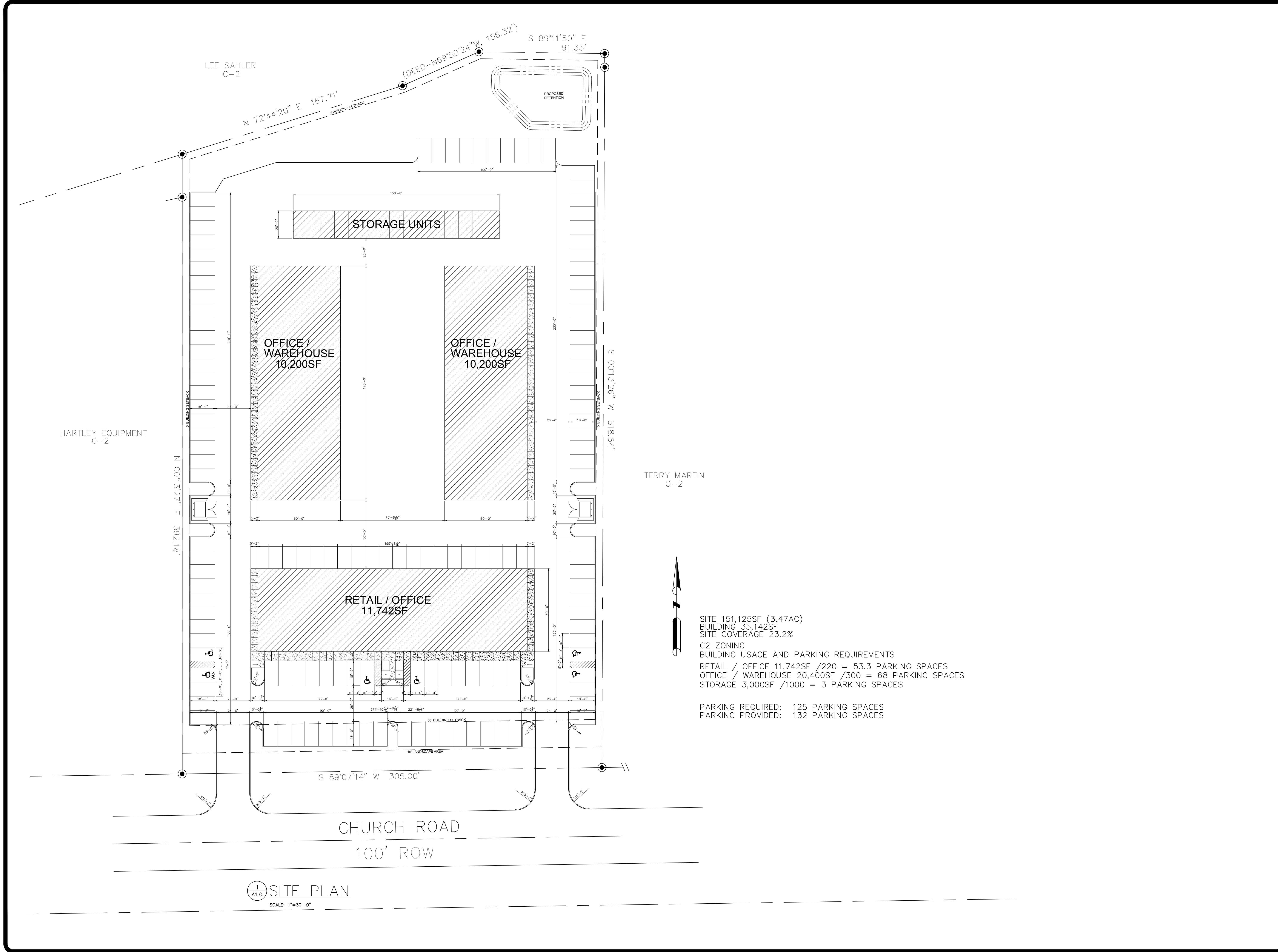


WOOLRIDGE & ASSOCIATES
 484 CHURCH RD. SUITE 700
 MADISON, MS 39110
 601-209-8888
 WOOLRIDGEARCHITECTURETWO.COM

Magnolia District
 Church Road
 Gluckstadt, Mississippi

THIS DESIGN IS THE COPYRIGHTED PROPERTY OF WOOLRIDGE & ASSOCIATES. IT MAY NOT BE REPRODUCED OR TRANSMITTED IN ANY FORM OR BY ANY MEANS, ELECTRONIC OR MECHANICAL, WITHOUT THE EXPRESS WRITTEN PERMISSION OF WOOLRIDGE & ASSOCIATES.

| |
|----------------|
| DRAWN |
| CHECKED |
| DATE 3/2/22 |
| SCALE |
| JOB NO. |
| SHEET |
| A0.0 |
| OF SHEETS |



SITE 151,125SF (3.47AC)
 BUILDING 35,142SF
 SITE COVERAGE 23.2%

C2 ZONING
 BUILDING USAGE AND PARKING REQUIREMENTS
 RETAIL / OFFICE 11,742SF /220 = 53.3 PARKING SPACES
 OFFICE / WAREHOUSE 20,400SF /300 = 68 PARKING SPACES
 STORAGE 3,000SF /1000 = 3 PARKING SPACES

PARKING REQUIRED: 125 PARKING SPACES
 PARKING PROVIDED: 132 PARKING SPACES

1 SITE PLAN
 A1.0
 SCALE: 1"=30'-0"

3/28/2022 3:33 PM
 DW
 SITE PLAN.dwg

